

Uniden®

BTHS800

Bluetooth®
Wireless Headset

OWNER'S MANUAL

What's in the box?



Bluetooth Headset



2x Ear hooks



A/C power
adapter



3 different size Ear buds
(Small, Medium, Large)

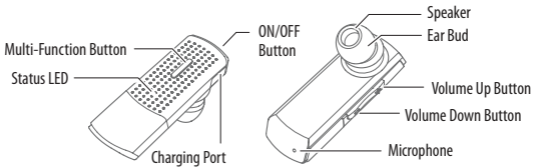


Owner's manual



USB cable

Getting to Know the BTHS800



LED and Tone Indicators

Status	LED Indication
Power On	Blue LED blinks 3 times.
Power Off	Red LED turns on for 2 seconds.
Pairing Mode	Blue & Red LED blink repeatedly.
Connectable Mode	Blue LED blinks 1 time every 5 seconds.
Connected Mode	Blue LED blinks 2 times every 5 seconds.
Active Call Mode	Blue LED blinks 3 times every 5 seconds.
Streaming Mode	Blue LED blinks 2 times every 5 seconds.
Charging in Progress	Red LED turns on.
Charging Complete	Red LED turns off.

Status	Tone Indication
Power On	Turn-on melody
Power Off	Long Low Beep
Connect	3 Short Beeps
Incoming Call	Ring melody
Active Call	2 Rising Beeps
Ending a Call	2 Falling Beeps
Low Battery	Low Battery melody

Charge the Battery

Before using your BTHS800, charge the battery for at least 2 hours. Charging the battery completely (and keeping it charged) will help you get the longest possible talk and standby time out of the battery. (On average, the battery provides about 4 hours of talk time or 5 hours music play and about 170 hours of standby time.)

- 1) Connect the AC adapter to the CHARGE connector on the side of the BTHS800 (open the rubber cover to access the connector) and plug it into any standard 240VAC power outlet.

You can also charge the BTHS800 using the USB cable. Connect the USB cable to the CHARGE connector on the side of the

BTHS800 (open the rubber cover to access the connector) and plug it into a standard USB port (not a bus powered hub).

Use ONLY the power adapter supplied with the BTHS800! Using any other adapter could damage your BTHS800, create a fire hazard, or cause a risk of electric shock!

- 2) While charging the LED will light up red and when charging is complete, the LED will turn off.

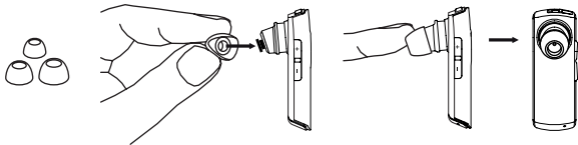
General Use;

For optimum charging turn power off before connecting charger. After charging turn power on and BTHS800 will automatically seek the previous connection.

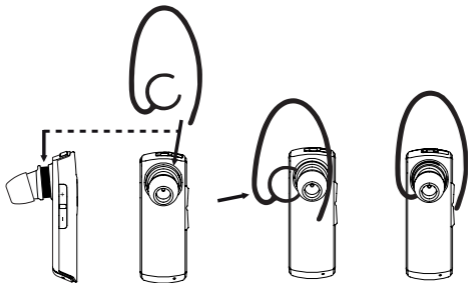
If power is on when charger is connected then Bluetooth is disconnected. After charge press the Multi-Function button momentarily to seek the previous connection.

Changing the Ear-Bud

Choose an appropriate sized ear bud (small, medium or large).



Changing the Ear-Hook



Ear hook shown in right ear orientation (for hooking onto the right ear). For left ear use reverse the Ear hook orientation so the hook is on the left side.

Pair your Phone to the BTHS800

Power On/ Off

Slide the power switch to ON to activate the headset.

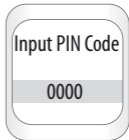
Slide the power switch away from ON to power off.

Pairing

Before using the headset, it must be paired with a mobile phone first.

1. Slide the power switch to ON.
2. Press and hold the Multi-Function button for 4 seconds until Blue & Red LED light flash repeatedly.
3. Search the headset via your mobile phone. Please follow the instructions of your mobile phone.

4. When you find your headset, BTHS800, please select it and confirm by selecting “Yes” or “OK”
5. Enter PIN Number ‘0000’ (4 zeros).



- ***SIMPLE PAIRING:*** If your mobile phone supports Bluetooth core spec 2.1, then you don't need to enter the PIN number to pair.
- ***EASY PAIRING:*** When you power on the BTHS800 for the first time, the headset will go into pairing mode immediately.

Music Multi-Point

The BTHS800 can connect to one mobile phone for making and receiving calls (Handsfree Profile) and connect to a second Bluetooth device (such as an MP3 player or laptop with Bluetooth A2DP Profile) for streaming music.

(This enables listening to music streamed from the secondary Bluetooth device while keeping a mobile phone connected on standby)

IMPORTANT!

The BTHS800 cannot connect to two mobile phones at the same time for making & receiving calls (Handsfree Profile).

Pairing a Second Bluetooth Device to Stream Music

- 1) Pair and connect a mobile phone to your BTHS800 following the pairing instructions on page 9.
- 2) Follow on from step 2 on page 9 and pair a second Bluetooth device (with A2DP Profile) to your BTHS800.
- 3) Turn the BTHS800 off then on again after pairing.
- 4) Connect your mobile phone.
- 5) Connect your secondary Bluetooth device, ready to play music.

Using the BTHS800

Turn power on and BTHS800 will automatically seek the previous Bluetooth connection.

If connection unavailable the BTHS800 will stay in connectable mode. Press the Multi-function button momentarily to seek the previous connection again.

Make and Receive Calls

Making a call

- ▶ To dial the Last number;
Press Multi-Function once quickly.
- ▶ To Voice dial;
Press and hold the Multi-Function button for 2 seconds. Once your mobile phone is in voice dialing mode, follow the steps indicated in your mobile phone's instructions. You can de-activate voice dial mode by pushing and holding Multi-Function for 2 seconds in voice dialing mode.

Your mobile phone must support voice dialing and have recorded voice tags before using this function.

Answering a call

Press the Multi-Function button briefly to answer a call.

Music stops when there is an incoming call, you can hear the melody.

Reject an incoming call

Press and hold the Multi-Function button for 2 seconds.

Ending a call

Press the Multi-Function button momentarily while you are on the line.

You can also end a call from your mobile by pushing "END".

Transferring a call

- ▶ Headset to mobile phone:

Press and hold the Multi-Function button for 2 seconds.

► Mobile phone to headset:

Press and hold the Multi-Function button for 2 seconds.

MIC Mute

Press and hold volume down for 2 seconds. MIC mute will then be activated. You can hear the status indication melody every 5 seconds in MIC mute mode.

You can de-activate MIC mute by pushing and holding volume down for 2 seconds.

Call waiting (3-way calling)

Before you use 3-way calling function, please make sure that your mobile phone supports “Handsfree profile”. And

please check with your network operator if they support Call hold & Multiparty call service.

- ▶ Connect to incoming call & disconnect your current call.
 - Press and hold volume down for 4 seconds.
- ▶ Put your current call in waiting mode and receive incoming call.
 - Press and hold volume up button for 4 seconds.

[TIP] You can also activate Call waiting mode by pushing "Send" on your mobile phone

Reset the Headset

First disconnect any active connection from mobile phone and/or MP3 player. BTHS800 will show connectable status, blue LED blinks 1 time every 5 seconds.

Press and hold the Multi-Function & Volume Down buttons for 3 seconds, blue LED will blink 5 times.

All device information and the call list of your headset will then be reset. Turn power off. When next time BTHS800 is powered on the headset will go into pairing mode immediately.

How to play music

To play music through the BTHS800 just play music on your mobile phone or secondary Bluetooth Device (with A2DP) as usual. Control the playback from your mobile phone or MP3 player as usual or use the BTHS800 controls as follows.

Play music

1. Press and hold Volume Up for 2 seconds.

2. Music stops when there is an incoming call, after the call ends, music resumes automatically.

Music pause

1. Press and hold Volume Up for 2 seconds.
2. Press and hold Volume Up for 2 seconds again, music resumes automatically.

Stop

- ▶ Press and hold Volume Down for 2 seconds while listening to music or while in pause mode.

Skip to Previous Song

- ▶ Press and hold Volume Down for 4 seconds.

Skip to next Song

- ▶ Press and hold Volume Up for 4 seconds.

Specifications

Bluetooth Core Spec	Bluetooth Specification 2.1+EDR
Profile	HSP, HFP1.5, A2DP, AVRCP
Carrier Frequency	2400 MHz to 2483.5 MHz
Modulation Method	GFSK, 1Mbps, 0.5BT Gaussian
Maximum Data Rate	Asynchronous : 2178.1 kbps / 177.1 kbps Synchronous : 1306.9 kbps / 1306.9 kbps
Bluetooth Class	Class 2
Hopping	1600 hops/sec, 1MHz Channel Space
Transmit Power	0 dBm
Coverage Range	10 Meters
Receiver Sensitivity	-82 dBm / 0.1 % BER
Continuous Talk Time	4 Hour
Music Play Time	5 Hour
Standby Time	170 Hour
Weight	10 g
Dimension	18.1(H) * 51.3(L) * 9.5(D) mm
Charging Voltage	DC 5.0 ~ 5.3 V
Charging Time	2 Hours
Operating Temperature	-10° to +50°C
Storage Temperature	-20° to +80°C
Battery	Lithium Polymer 3.7V 90mAH

SAFETY AND GENERAL INFORMATION

- 1) Please read this guidebook carefully and follow the instruction.
- 2) To avoid any damage or malfunction of the unit, do not drop it from high place.
- 3) Keep away unit from humidity, water and any other liquid. And if the unit is exposed by water, moisture and other liquid directly, then do not turn on and operate it for avoiding any electrical shock, explosion and damage of the unit.
- 4) Do not place or keep the unit near the heat sources such as direct sun light, radiators, stoves or other apparatus

which produce heat. It may cause explosion, degrade of performance and reduce battery life.

- 5) Do not modify, repair & disassemble unit at discretion (especially battery: it may cause an explosion)
- 6) Do not place the heavy objects on the unit.
- 7) Use only supplied and approved charger.
- 8) Replacement or service must be done at a qualified service center or manufacturer.
- 9) Unplug this unit when unused for long period of time or during lightening storms.

CAUTIONS: ELECTRIC SHOCK HAZARD

The battery used in this device may present a risk of fire or chemical burn if mistreated.

WARRANTY

Two Year Limited Warranty

UNIDEN BTHS800

IMPORTANT Evidence of the original purchase is required for warranty service.

Warrantor: Uniden Australia Pty Limited ABN 58 001 865 498
Uniden New Zealand Limited

Elements of Warranty: Uniden warrants to the original retail owner for the duration of this warranty its BTHS800 (hereinafter referred to as the Product), to be free from defects in materials and craftsmanship with only the limitations or exclusions set out below.

Warranty Duration: This warranty to the original retail owner only is only valid in the original country of purchase and shall be of no further effect 2 years after the date of original retail sale. This warranty will be deemed invalid if the Product is: (A) Damaged or not maintained as reasonable and necessary, (B) Modified, altered or used as part of any conversion kits, subassemblies, or any configurations not sold by Uniden, (C) Improperly installed, (D) Repaired by someone other than an authorized Uniden Repair Agent for a defect or malfunction covered by this warranty, (E) Used in conjunction with any equipment or parts or as a part of a system not manufactured by Uniden. (F) Only available in the original country of sale.

Parts Covered: This warranty covers for two (2) years, the Product and included accessories.

Statement of Remedy: In the event that the Product does not conform to this warranty at any time while this warranty is in effect, the warrantor, at its discretion, will repair the defect or replace the Product and return it to you without charge for parts and service. This warranty does not provide for reimbursement or payment of incidental or consequential damages. This EXPRESS WARRANTY is in addition to and does not in any way affect your rights under the TRADE PRACTICES ACT 1974 (Cth) (Australia) or the CONSUMER GUARANTEES ACT (New Zealand).

Procedure for obtaining performance or warranty: in the event that the Product does not conform to this warranty, the Product should be shipped or delivered, freight prepaid, with evidence of original purchase (e.g. a copy of the sales docket) to the warrantor at

UNIDEN AUSTRALIA PTY LTD

Service Division
345 Princes Highway,
Rockdale, NSW 2216
Fax (02) 9599 3278
www.uniden.com.au

UNIDEN NEW ZEALAND LTD

Service Division
150 Harris Road, East Tamaki,
Manukau 2013
Fax (09) 274 4253
www.uniden.co.nz

For more exciting new products please visit our website:

Australia: www.uniden.com.au

New Zealand: www.uniden.co.nz

Uniden®

© 2010 Uniden Australia Pty Ltd/Uniden New Zealand Limited

Printed in PRC