

# Uniden®



# **TRAX CENTRAL**

## **Content Manager Software**

# USER MANUAL

## **Copyright note**

The product and the information contained herein is subject to change without prior notification.

This manual may not, in whole or in part, be reproduced or transmitted in any form either electronically or mechanically, including photocopying and recording, without the express written consent of Uniden Australia Pty Limited/Uniden New Zealand Limited.

© 2008 - Uniden Australia Pty Limited/Uniden New Zealand Limited.

All rights reserved.

Microsoft, Windows, Vista, and Outlook are either registered trademarks or trademarks of Microsoft Corporation in the United States and/or other countries.

# Table of Contents

<b>1 Getting started with Trax Central</b> .....	5
1.1 Installing Trax Central.....	6
1.2 Starting Trax Central.....	7
1.2.1 Before startup.....	7
1.2.2 Selecting a device profile.....	7
1.2.3 Recovery.....	7
1.3 Controls .....	8
1.3.1 Menu bar.....	9
1.3.2 Toolbar icons.....	10
1.3.3 Operations window (available in Advanced mode only).....	10
1.3.4 Information window.....	11
1.3.5 Contents list (available in Advanced mode only).....	11
1.3.6 Contents list filters (available in Advanced mode only).....	12
<b>2 Using Trax Central</b> .....	13
2.1 Managing contents.....	13
2.1.1 Installing contents.....	13
2.1.2 Removing contents.....	13
2.1.3 Updating contents.....	14
<b>3 Tools and Options</b> .....	15
3.1 Transfer Trip Plans.....	15
3.1.1 Importing KML or KMZ files.....	15
3.1.2 Exporting KML or KMZ files to the PC.....	15
3.1.3 Removing Trip Plans.....	16
3.2 Backups.....	16
3.2.1 Creating backups.....	16
3.2.2 Restoring backups.....	16
3.2.3 Removing backups.....	17
3.3 Licences.....	17
3.4 Content DVDs.....	17
3.5 Device profiles.....	17
3.5.1 Removing device profiles.....	18

3.5.2 Editing device profiles.....	18
3.6 Preferences.....	18
3.6.1 General.....	18
3.6.2 Visualization.....	19
3.6.2.1 Customising table fonts.....	19
3.6.2.2 Customising table colours.....	19
3.6.3 Connection.....	19
<b>4 Troubleshooting.....</b>	<b>21</b>
<b>5 Uninstalling Trax Central.....</b>	<b>22</b>

# 1 Getting started with Trax Central

Trax Central is a PC based application that has a number of important features to help you manage the content of your TRAX device. With Trax Central you can:

- Backup the content stored on your device to your PC and restore it back to your device later.
- Connect to the Trax Central server to download updates or additional content for your navigation software.
- Transfer trip plans in KML or KMZ format between your PC and your device.

There are several types of navigation content that are loaded on your device and that can be used with Trax Central. The content that is available depends on the device you originally purchased and the country where you purchased it.

Content is broken down into smaller, more manageable pieces for each region or country. The various types of content that might be available include:

- **Maps** are the road networks used by the navigation system to route your trips.
- **Landmarks** are 3D artistic or block representations of prominent or well-known objects. 3D landmarks are only available in selected cities and countries.
- **3D Cities** are full 3D city building data representing actual building sizes and positions on the map. 3D cities building data availability is limited to the city centres of major cities in the US and Europe.
- **POIs** are Points of Interest, which are specific reference points that can be searched and navigated to. They are sorted into different categories like hotels, restaurants, tourist attractions, banks and many other locations users may want to find while they travel.
- **Phonemes** are used by the Text to Speech (Spoken Street Names) navigation engine to announce the road names during navigation. Text to Speech voices are not available for all languages and can be set in the navigation software by selecting any voice profile with '(TTS)' in its name.
- **Terrain** is the 3D terrain map data showing changes in terrain and elevations or depressions in the land when you view the map. This is used to plot the route map in 3D during navigation.
- **Voice language** is the voice profile used for navigation guidance. These are either pre-recorded voices or Text to Speech voices. Text to Speech voice profiles are indicated by '(TTS)' and use artificial intelligence to announce route events together with road names during navigation. Non Text to Speech voices are recorded in the identified language and only announce route event types and distances without road names.
- **Application** is the navigation software that is running on your device.
- **Menu language** is the list of available languages for the navigation software to display button labels and screen messages.
- **Schemes** are different daytime and night colour profiles that let you personalise the look of the map in the navigation software.

## System requirements

To use Trax Central, you need a computer that has a USB port and meets the following minimum specifications.

To access the Trax Central server, you also need an active Internet connection on your PC.

	Minimum	Recommended
Operating system	Windows XP	Windows Vista
Processor	300 MHz clock speed	Intel Pentium/Celeron family, or AMD K6/Athlon/Duron family, or compatible processor
System memory	256 MB	512 MB
Free disk space	2 GB	5 GB



**NOTE:** In order to install new contents on your device from the Trax Central server, you need an active Internet connection on your PC! Installing content items previously backed up from your computer or from an inserted content DVD is possible without an Internet connection.

---

## 1.1 Installing Trax Central

Follow these steps to install Trax Central on your computer:

1. First locate and run the installer application:
  - Visit <http://www.uniden.com.au/traxcentral.asp> to download the latest Trax Central to your PC. Download the file and run the installer.
2. Select a language from the list, then click **OK**.
3. Read the welcome page, and click **Next** to continue.
4. Review the licence agreement. If you want to continue, click **I Agree**.
5. Select the installation folder. A default installation folder is already given. To choose a different one, type in the path name, or click **Browse**, and select a different folder.
6. Click **Install** to start the copying process. To see the details during copying, click **Show Details**.
7. (optional) Trax Central is automatically started right after the installation. To avoid this, clear the checkbox.
8. The installation is complete, click **Finish** to exit.



**NOTE:** Trax Central has an auto-updating feature to ensure you always have the most up-to-date version on your PC. Each time you launch the application, it checks for available updates.

---

## 1.2 Starting Trax Central

To start Trax Central, do the following:

1. First make sure the TRAX device is turned off. Connect your TRAX device to the PC using the USB cable.
2. Press & hold the power button to turn the device on.
3. The “USB CONNECTED” screen appears. Touch **UPDATE** in the bottom right corner. The navigation software will shutdown and the the USB connection will be enabled. This may take a few minutes. The “UPDATE MODE” screen will appear.
4. Go to START/PROGRAMS/UNIDEN and click on Trax Central to start the program.



5. When finished with Trax Central press & hold the power key of the TRAX device to turn it off BEFORE disconnecting the USB cable. If you disconnect the USB cable first then an “Update Fail” screen will appear. This screen can be ignored. Touch **RESTART** and the TRAX device will then power down.



**NOTE:** Trax Central will not start up if a TRAX device is not connected to your PC.

### 1.2.1 Before startup

When Trax Central is started, it performs a few steps before you can start managing the content of your navigation software.

If you have not created a backup of your TRAX device before, Trax Central will offer the possibility of a full or partial backup at each startup. For details, see page 16.



### 1.2.2 Selecting a device profile

Every time you start Trax Central with a **new** TRAX device, a different device profile needs to be created. The device profile selection screen appears. Give a profile name for the connected device, or accept the one automatically created.



Trax Central automatically recognises a device that has been used before. In this case the device profile screen does not appear, and the previously given profile name is used.

### 1.2.3 Recovery

When the content of the navigation software is damaged, Trax Central cannot recognise it.

If this happens, Trax Central warns you, and you can attempt to recover it from a previously saved backup. Do the following test [you can only do this if you have backed up your TRAX device content, which is highly recommended]:

1. Connect your TRAX device to the PC using the USB cable.
2. Launch Content Manager.
3. Click **Recovery** at the warning message.
4. Select the appropriate **Profile name**. The **Device type** appears automatically.
5. The newest available **Backup** and the **Drive** letter is shown by default. Change them if necessary.
6. Click **Start** to begin the recovery.
7. Click **Yes** to confirm the warning message.



**NOTE:** In order to perform a recovery, you need a full backup. Creating a full backup is recommended when you start using your TRAX device.

## 1.3 Controls

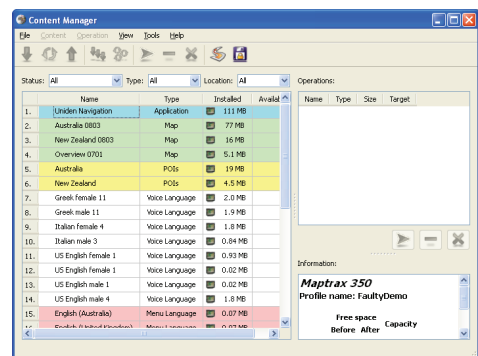
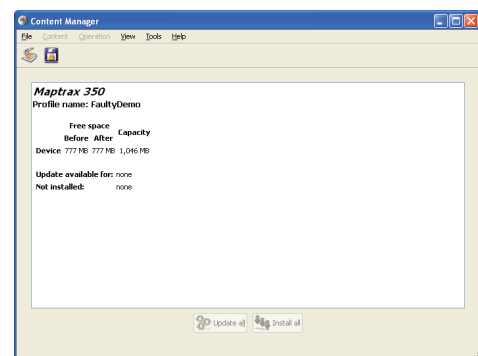
When Trax Central is started the first time, it opens in **Simple mode**. Simple mode contains the full Tools menu but only the most frequently used content functions:

- **Update all:** Updates all contents on the device. Press the button, and then press **Yes** to confirm the operations summary.
- **Install all:** Installs all available contents on the device. Press the button, and then press **Yes** to confirm the operations summary.

Later you can switch to **Advanced mode** in the **View menu**. In Advanced mode all functions are available.

The main window of Trax Central is divided into the following sections:

- the Menu bar
- the Toolbar icons
- the Contents list, all content items available for the connected device (available in Advanced mode only)
- the Contents list filters: Status, Type and Location (available in Advanced mode only)
- the Operations window (available in Advanced mode only)
- the Information window



## 1.3.1 Menu bar









The Menu bar contains the following submenus:

- **File:**
  - **Exit:** Quits Trax Central.
- **Content** (available in Advanced mode only):
  - **Install:** Installs the selected contents on the device.
  - **Install all:** Installs all available contents on the device.
  - **Update:** Updates the selected contents on the device.
  - **Update all:** Updates all contents on the device.
  - **Remove:** Removes the selected contents from the device.
- **Operation** (available in Advanced mode only):
  - **Perform operations:** Executes all content operations listed in the **Operations** window.
  - **Remove operation:** Cancels the selected content operations.
  - **Clear operations:** Cancels all content operations listed in the **Operations** window.
- **View:**
  - **Advanced mode:** In this mode all content operations and tools are accessible.
  - **Simple mode:** In this mode all functions in the **Tools** menu are available, but only two of the content operations (**Install all** and **Update all**) can be chosen.
- **Tools:**
  - **Transfer Trip Plans:** Launches the **Manage Trip Plans** screen to transfer KML or KMZ format trip plans from your PC to your device, or from your device to your PC. KML & KMZ files are used for geographic data. You may save geographic locations in KML & KMZ format onto your PC from web programs such as Google Earth or the maps on the Whereis.com.au website.
  - **Backups:** Launches the **Manage backups** screen to create a backup or recover one to your device.
  - **Licences:** Opens the list of active and inactive licenses on your device, and lets you activate or deactivate them one by one.
  - **Content DVDs:** Trax Central can read and catalogue the content of DVDs that are bought for or enclosed with the product. In this way you can install or reinstall content items on your device without an Internet connection.
  - **Device Profiles:** Lets you edit and remove the device profiles you have created.
  - **Preferences:** Lets you manage preferences available for Trax Central.
- **Help:**
  - **Online support:** Launches the product website ([www.uniden.com.au/traxcentral.asp](http://www.uniden.com.au/traxcentral.asp)) using the Internet connection of the PC.
  - **About:** Version and copyright information of Trax Central.



### 1.3.2 Toolbar icons

The icons under the menu bar perform the same actions as the menu items in the **Content**, **Operation** and **Tools** menus.

The following icons are available in **Advanced mode** only:

Icon	Menu Item	Function
	<b>Content &gt; Install</b>	Installs the selected contents on the device.
	<b>Content &gt; Update</b>	Updates the selected contents on the device.
	<b>Content &gt; Remove</b>	Removes the selected contents from the device.
	<b>Content &gt; Install all</b>	Installs all available contents on the device.
	<b>Content &gt; Update all</b>	Updates all contents on the device.
	<b>Operation &gt; Perform operations</b>	Executes all content operations listed in the <b>Operations</b> window.
	<b>Operation &gt; Remove operation</b>	Cancels the selected content operations.
	<b>Operation &gt; Clear operations</b>	Cancels all content operations listed in the <b>Operations</b> window.

The following icons are always available:

Icon	Menu Item	Function
	<b>Tools &gt; Transfer Trip Plans</b>	Launches the <b>Manage Trip Plans</b> screen to transfer KML or KMZ format trip plans from your PC to your device, or from your device to your PC.
	<b>Tools &gt; Backups</b>	Launches the <b>Manage backups</b> screen to create a backup or recover one to your device.

### 1.3.3 Operations window (available in Advanced mode only)

After selecting an action, it appears in the **Operations** window. The name, type and size of the content are displayed here together with the icon of the assigned action and the targeted storage location.

All the content operations in the **Operations** window can be performed by clicking  , or by clicking **Perform operations** in the **Operation** menu.

### 1.3.4 Information window



This window displays information about the connected device. The following parameters are shown:

- The name of the device.
- The name of the device profile.
- The **Before** column displays the current amount of free storage space in the available storage locations.
- The **After** column displays the amount of free storage space in the different storage locations after performing the currently selected operations.
- The **Capacity** column displays the total amount of storage space in the different storage locations.
- **Update available for:** The number of update packages is displayed together with their total required storage space.
- **Not installed:** The number of packages not yet installed on the device is displayed together with their total required storage space.


### 1.3.5 Contents list (available in Advanced mode only)

The largest part of Trax Central is the list of content elements available for the connected device. The columns of the list are as follows:




- **Name:** The name of the content. This column can also include an icon that shows the status of the specific content:

Icon	Function
	This content is not installed yet.
	This content can be updated.
No icon	This content is installed and up-to-date.

- **Type:** The type of content.
- **Installed:** The column indicates whether the content was installed. It also displays the amount of storage space the installed content currently uses, and an icon that shows where the content is installed:

Icon	Function
	This content is installed on the memory in your device.

- **Available:** This column displays the amount of storage space needed to install this content element, and an icon that shows the location of the available content:

Icon	Function
	This content can be downloaded from the internet. When you initiate Perform Operations, Trax Central downloads it from the product site, and installs it on your device.
	This content is already downloaded to your PC. Trax Central can install it on your device without an active Internet connection.
	This content is available on DVD. Trax Central can install it on your device without an active Internet connection.

### 1.3.6 Contents list filters (available in Advanced mode only)

There are three filters to narrow the Contents list: Status, Type and Location.

- **Status:** Filters contents based on their status:
  - **All:** Displays all contents.
  - **Installed:** Displays only contents installed on the device.
  - **Not installed:** Displays only available contents that are not installed on the device.
  - **Updatable:** Displays contents for which a newer version is available than the one installed.
  - **Updatable or not installed:** Displays all contents that are updatable or not installed.
  - **Up-to-date:** Displays all installed and up-to-date contents.
- **Type:** Filters contents based on their type.
- **Location:** Filters contents based on their storage location.



**NOTE:** Not installed content items only appear in the list when **Location** is set to **All**.


---

# 2 Using Trax Central

## 2.1 Managing contents


### 2.1.1 Installing contents



**NOTE:** Only non-installed contents can be installed. They have an  icon next to their name in the Contents list.

To upload the selected contents to the device, do the following:

1. Select the content items from the Contents list. There are several ways to do this:

- Click on a content item in the Contents list. To select multiple items, use either the Shift or the **Ctrl** key. Click **Install** in the **Content menu** or click  in the toolbar.
- Drag-and-drop the content items to the **Operations** window.
- Double-click a content item.
- Right-click on a content item and select **Install**.

2. Execute the actions by clicking **Perform operations** in the **Operation** menu or by clicking



in the toolbar.

3. Click **Yes** to confirm the operations summary.

4. Click **OK** when the process is finished.


### 2.1.2 Removing contents



**NOTE:** Only installed contents can be removed.

To remove selected content elements, do the following:

1. Click on a content item in the Contents list. To select multiple items, use either the Shift or the **Ctrl** key.

2. Click **Remove** in the **Content menu**, click  in the toolbar, or right-click on the selected contents and click **Remove**.

3. Execute the actions by clicking **Perform operations** in the **Operation** menu or by clicking




in the toolbar.

4. Click **Yes** to confirm the operations summary.

5. Click **OK** when the process is finished.



## 2.1.3 Updating contents



**NOTE:** Only non-up-to-date contents can be updated. Non-up-to-date contents have an  icon next to their name in the Contents list.

---

To update the selected contents, perform the following steps:

1. Select the content items from the Contents list. There are several ways to do this:
  - Click on a content item in the Contents list. To select multiple items, use either the **Shift** or the **Ctrl** key. Click **Update** in the **Content menu** or click  in the toolbar.
  - Drag-and-drop the content items to the **Operations** window.
  - Double-click a content item.
  - Right-click on a content item and select **Update**.
2. Execute the actions by clicking **Perform operations** in the **Operation** menu or by clicking  in the toolbar.
3. Click **Yes** to confirm the operations summary.
4. Click **OK** when the process is finished.



**TIP:** You can perform different content operations (installing, updating, removing) at the same time. Just group them in the **Operations** window together, and click on

**Perform operations** in the **Operation menu**, or click  in the toolbar.

---

# 3 Tools and Options

The tools and options in Trax Central can be accessed in the **Tools** menu.

## 3.1 Transfer Trip Plans

If planned trips are available in KML or KMZ format, you can upload them to your device with Trax Central. KML & KMZ files are used for geographic data. You may save locations in KML & KMZ format onto your PC using web programs such as Google Earth the maps on the Whereis.com.au website.

Trip plans can be transferred to your device as **Routes** or as **POIs**.

### 3.1.1 Importing KML or KMZ files

1. Save the trip plan to your PC.
2. Connect your TRAX device to the PC using the USB cable.
3. Under **Tools**, select **Transfer Trip Plans**.
4. You can select **Import as Route**, or **Import as POI**:
  - **Import as Route** copies the trip plan on the TRAX device, and the content of the file appears in the navigation software as a route.
  - **Import as POI** moves the route points of the trip plan into the POI database on your device. They can be searched and used to navigate with, just like the pre-installed POIs.
5. Select the trip plan stored on your PC to have it transferred to your device.
6. Click **Open** to start the transfer.
7. Click **OK** when the process is finished.
8. The imported file appears in the list with the following details: file name, type and storage location.
9. Click **Close**.

### 3.1.2 Exporting KML or KMZ files to the PC

A trip plan already imported in your device can be saved to your PC.

1. Under **Tools**, select **Transfer Trip Plans**.
2. Highlight one of the trip plans in the list.
3. Click **Export to PC**.
4. Select the location, and modify the file name if necessary.
5. Click **Save** to download the trip plan from your device to your PC.
6. Click **OK** when the process is finished.
7. Click **Close**.

### 3.1.3 Removing Trip Plans

If you no longer need a trip plan that is already imported on your device, do the following:

1. Under **Tools**, select **Transfer Trip Plans**.
2. Highlight one of the trip plans in the list.
3. Click **Remove**.
4. Click **Close**.

## 3.2 Backups

You can make a duplicate copy of the device contents and store it on your PC. Backups are useful to have as a safety precaution in case you unintentionally delete content from your device. You always have licence to the content that you purchased with your device and you can use Trax Central to re-download this at any time. Backups can come in handy to save time with downloads or if your PC is not connected to the Internet.

### 3.2.1 Creating backups

To backup your data, do the following:

1. Select **Backup** from the **Tools** menu to open the **Manage backups** window.
2. Click on **Backup** in the **Manage backups** window, then select **Backup**.
3. Use the radio buttons to select the data to save:
  - full backup
  - backup user data only
4. The default backup folder is displayed. To define a different one, click **I want to define a folder manually**, and then enter the path of the desired location, or click **Browse** and select the folder.
5. Click **OK** to start the backup process.
6. Click **OK** when the process is finished.

### 3.2.2 Restoring backups

To restore backed up data to the device, do the following:

1. Select **Backup** from the **Tools** menu to open the **Manage backups** window.
2. Select a previously saved backup from the list.
3. Click **Restore**.
4. Click **Yes** to start restoring your data.
5. Click **OK** when the process is finished.



**NOTE:** The time needed for backup or restore can vary considerably depending on the size of the files you selected to backup or to restore.

---

### 3.2.3 Removing backups

To remove backed up data, do the following:

1. Select **Backup** from the **Tools** menu to open the **Manage backups** window.
2. Select a previously saved backup from the list.
3. Click **Remove**.
4. Click **Yes** to delete the backup.

## 3.3 Licences

You can list and manage the access licences in your device.

When your TRAX device is connected to Trax Central, the licenses found on the device are automatically saved in the profile associated with this TRAX device. This way Trax Central can recover damaged or lost licenses automatically.

In the **Tools** menu click **Licences** to see the list of licence files installed on your device. Different content elements may have separate licence files associated with them. A content is only visible in the navigation software if the appropriate licence is active.

To change the status of the installed licences, highlight one of the list items, and then click **Activate** for an inactive licence, or **Deactivate** for an active one.



**NOTE:** If you deactivate some of your licences, a part of the content installed on your device becomes invisible. To be able to use them again, you need to return here and activate the necessary licence or licences.

---

## 3.4 Content DVDs

Trax Central can read and catalogue the content of DVDs that are bought for or enclosed with the product. In this way you can install or reinstall content items on your device without an Internet connection.

When this function is started the first time, the list is empty. If you have a content DVD in your PC, click **Add**, and Trax Central checks the content of the DVD and puts the name of the disc on the list.

If you no longer need one of the listed DVDs, highlight it, and click **Remove**. The DVD is deleted from the list, and the catalogue of its content is cleared from Trax Central.

## 3.5 Device profiles

Existing device profiles can be edited and removed in the Device profiles menu. The current device profile is displayed in bold.



**NOTE:** New device profiles can only be created when you start Trax Central with a new TRAX device connected.

---

## 3.5.1 Removing device profiles

To remove a device profile that is no longer needed, do the following:

1. Select **Device profiles** from the **Tools** menu.
2. Click on the device profile you want to remove.
3. Click **Remove**.
4. Click **Yes** to proceed with deleting the selected device profile.



### **NOTE:**

The currently used profile cannot be deleted.

---



**WARNING:** When removing a device profile, all backups and licences saved with the profile will be deleted from the PC.

---

## 3.5.2 Editing device profiles

To edit a device profile, do the following:

1. Select **Device profiles** from the **Tools** menu.
2. Click on the device profile you want to edit.
3. Click **Edit**.
4. Modify the profile parameters:
  - To change the name of the profile, enter the desired profile name.
  - To change the type of the device, select the appropriate device type from the list of available device types.
5. Click **OK** to confirm the changes.

## 3.6 Preferences

Settings can be configured in the Preferences menu.

Settings are displayed on the following tabs:

- **General**
- **Visualization**
- **Connection**

### 3.6.1 General

The **General preferences** window has the following sections:

- **Language:** The language of Trax Central can be changed by selecting a language

from the drop-down menu.

- **Mouse wheel speed:** The mouse wheel speed in the **Contents list** can be changed by moving the slider to the desired position.
- **Cache:** When a content item is installed on the TRAX device from the Internet, the content item is also saved automatically on the computer in a cache. If a content item is stored in the cache, later it can be installed again on the TRAX device without an Internet connection. The overall size of all content items stored in your computer is displayed. The cache can be emptied by clicking **Clear**.



**WARNING:** By clearing the cache, all saved contents are deleted from the PC. If you need to install them again later, you need to download them using the Internet connection of the PC.

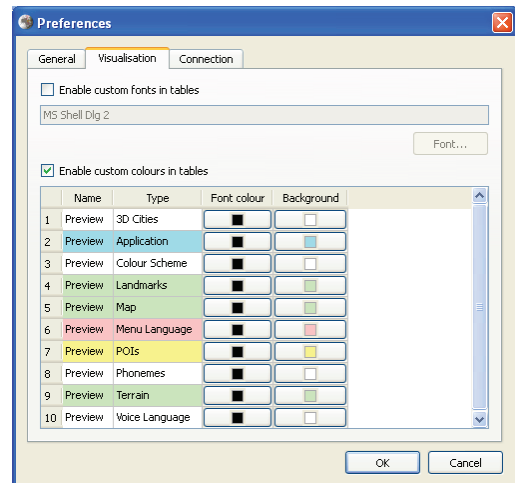
## 3.6.2 Visualization

You can set customised fonts and colours for the **Contents list**.

### 3.6.2.1 Customising table fonts

To change table fonts, do the following:

1. Enable custom fonts by ticking **Enable customised fonts in tables**.
2. Click **Font**.
3. Select the desired font and click **OK**.



### 3.6.2.2 Customising table colours

You can define custom foreground and background colours for the different content types. Foreground colour is the colour of the text, while background colour is the colour of the cell. By choosing custom table colours, content types are easier to distinguish.

To change table colours, do the following:

1. Enable customised table colours by ticking **Enable customised colours in tables**.
2. Click on the button next to a content type in the foreground or the background column.
3. Select the desired colour.
4. (optional) Repeat the above steps to change more colours.
5. Click **OK** to finish the process.

## 3.6.3 Connection

Settings in the **Connection preferences** window determine how Trax Central is connected to the Internet:

- **Direct connection to the Internet:** The PC has a direct Internet connection. Trax Central can use this channel to access the remote database of existing updates.

- **Manual proxy configuration:** If your PC is connected to the Internet via a proxy server, you need to enter the proxy parameters in order to gain access to the Internet. If you are not experienced in configuring proxy connections, ask for the help of your network administrator.



**NOTE:** The changes take effect only after clicking OK.

---

# 4 Troubleshooting

In case of erroneous or suspicious behaviour of Trax Central, check the log file for details.

On **Windows Vista** computers the log file can be found at the following location:

```
C:\Users\<user name>\AppData\Roaming\uniden.com.au\Trax Central\
Log\cm.log
```

On **Windows XP** computers the log file can be found at the following location:

```
C:\Documents and Settings\<user name>\Application Data\
uniden.com.au\Trax Central\Log\cm.log
```

# 5 Uninstalling Trax Central

To uninstall Trax Central, do the following:

1. Exit **Trax Central** if it is running.
2. Click **Start > All Programs**.
3. Open **Uniden**.
4. Select **Uninstall Trax Central**.
5. Click **Uninstall**. To see the details during the process, click **Show Details**.
6. Click **Finish** to exit when the process is complete.